

S20 - Hiroaki Umeda

Technical Rider

Haptic

*version.1.2,
31 July 2010*

CONTACT:

Hiroaki Umeda

contact@hiroakiumed.com

All correspondence needs to be in English

REQUIREMENTS:

STAGE

- **STAGE SIZE** at least 13m width, 9m depth, at least 7m height
- **AUDITORIUM SEATING** like a staircase, not raised stage.
- **WHITE DANCE CARPET** at least 11m x 7m
- **BLACK DANCE CARPET** placed on each side of white carpet
- **WHITE CYCLORAMA** is able to cover whole back wall. (!!not transparent)

SOUND

- **PA CONSOLE MIXER x 1** (we use 2 line inputs)
- **SPEAKERS AND SUB** (depends on stage size)
- **SPEAKER for monitor x 2** (depends on stage size)
- **CABLES JACK x 2** (jack for sound interface on computer)

LIGHTING

- **54 Dimmers 3KW**
- **CYCS (sur platines) x 24**
- **PC 1000 W (60°) (dont 6 sur platines) x 10**
- **PC 2000 W (60°) x 8**
- **614 SX (Profile 16°/35°) x 22**
- **714 SX (Profile 15°/40°) x 11**
- **MARTIN ATOMIC 3000 x 3**
- **Feet Projector x 6** (or anyother possibilty to raise 3 PC up to 0.4m from stage floor)
- **GELS 106 (Lee) / 119 (Lee) / 139 (Lee) / 200 (Lee) / 241 (Lee) / 055R / 132R /**
- **BLACK ALUMINUM TAPE**
- **BLACK FOIL**
- **DESK x 1** (to place a computer and other equipments)
- **CHAIR x 1**

OTHER

- **DRESSING ROOM** for one person
- **CATERING** bottles of water, fruit juice, banana

S20 BRINGS:

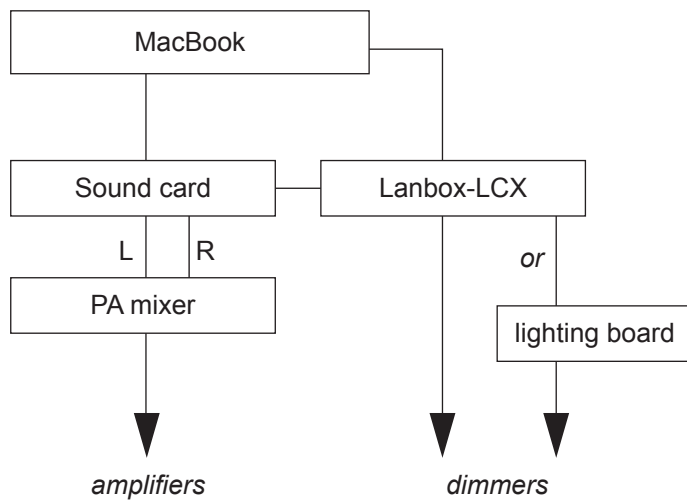
MacBook Pro
Lanbox-LCX (DMX interface)
AudioFire4 (audio interface)

STAFF AND SCHEDULE:

- **1 Lighting technician and 3 Lighting hand**
- **1 sound technician**
- **1 stage manager**

Setting: 4H
Focussing: 7H
Technical checking: 2H
Rehearsal: 2H

SYSTEM CHART and TECHNICAL DETAILS



NOTES:

Lighting cues are output from computer with DMX signal through Lanbox to synchronize sound and lighting. If lighting board doesn't work while it is controlled by Lanbox, please prepare something to avoid this, for example using a DMX tester and so on.

LIGHTING:

Diffuser filter has to be chosen depending on stage height. Please send us technical riders of your venue.

Light for applause and for audience have to be controlled independently of artist's computer. Your lighting desk will be used for focussing. During the show, light is controlled by artist's computer.

A desk and a chair are needed to place artist's equipments on stage left.

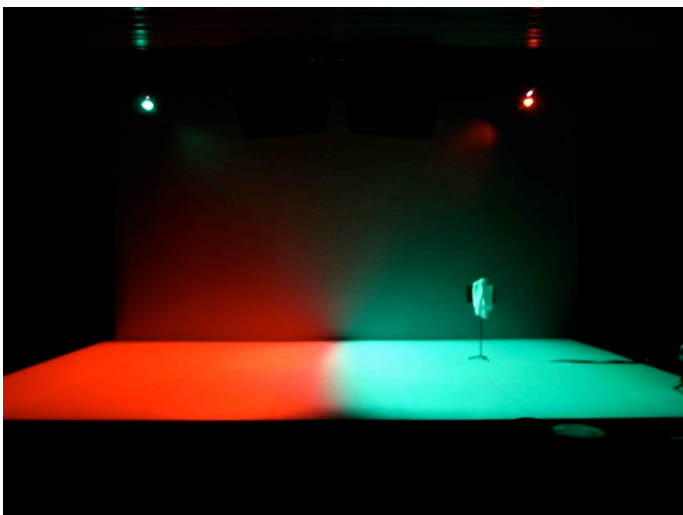
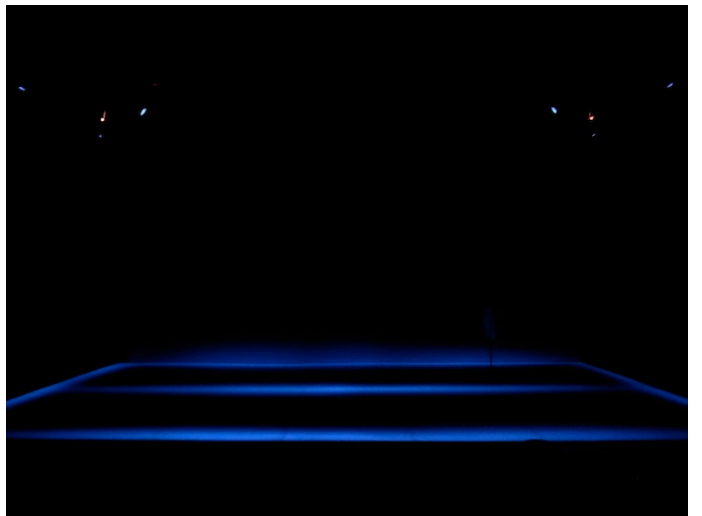
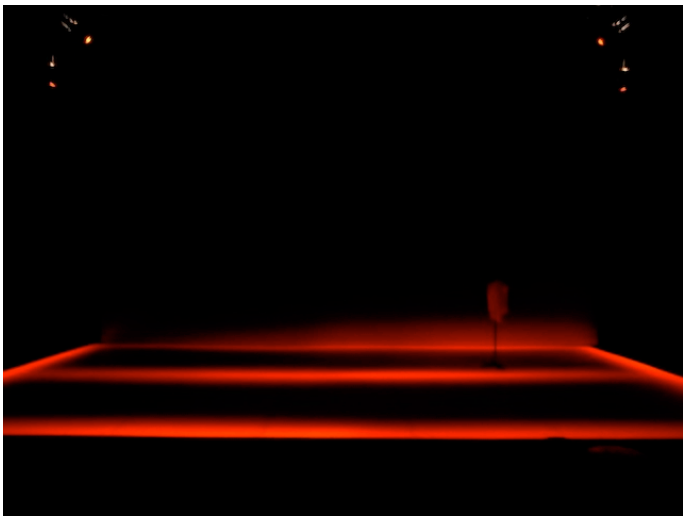
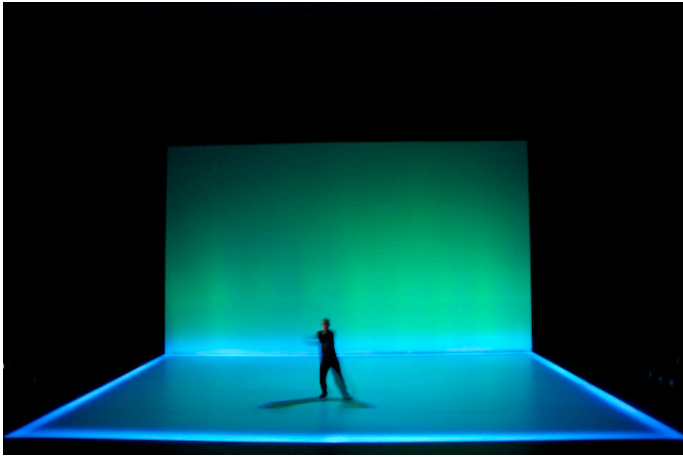
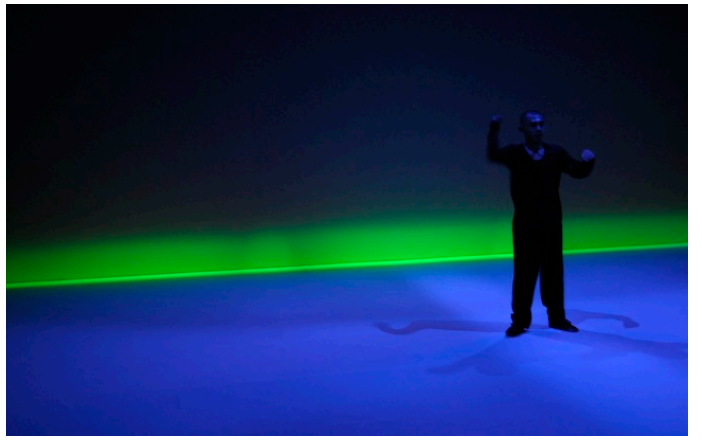
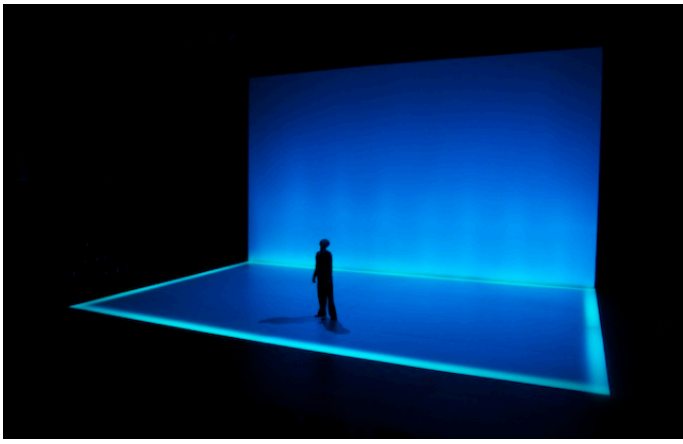
SOUND:

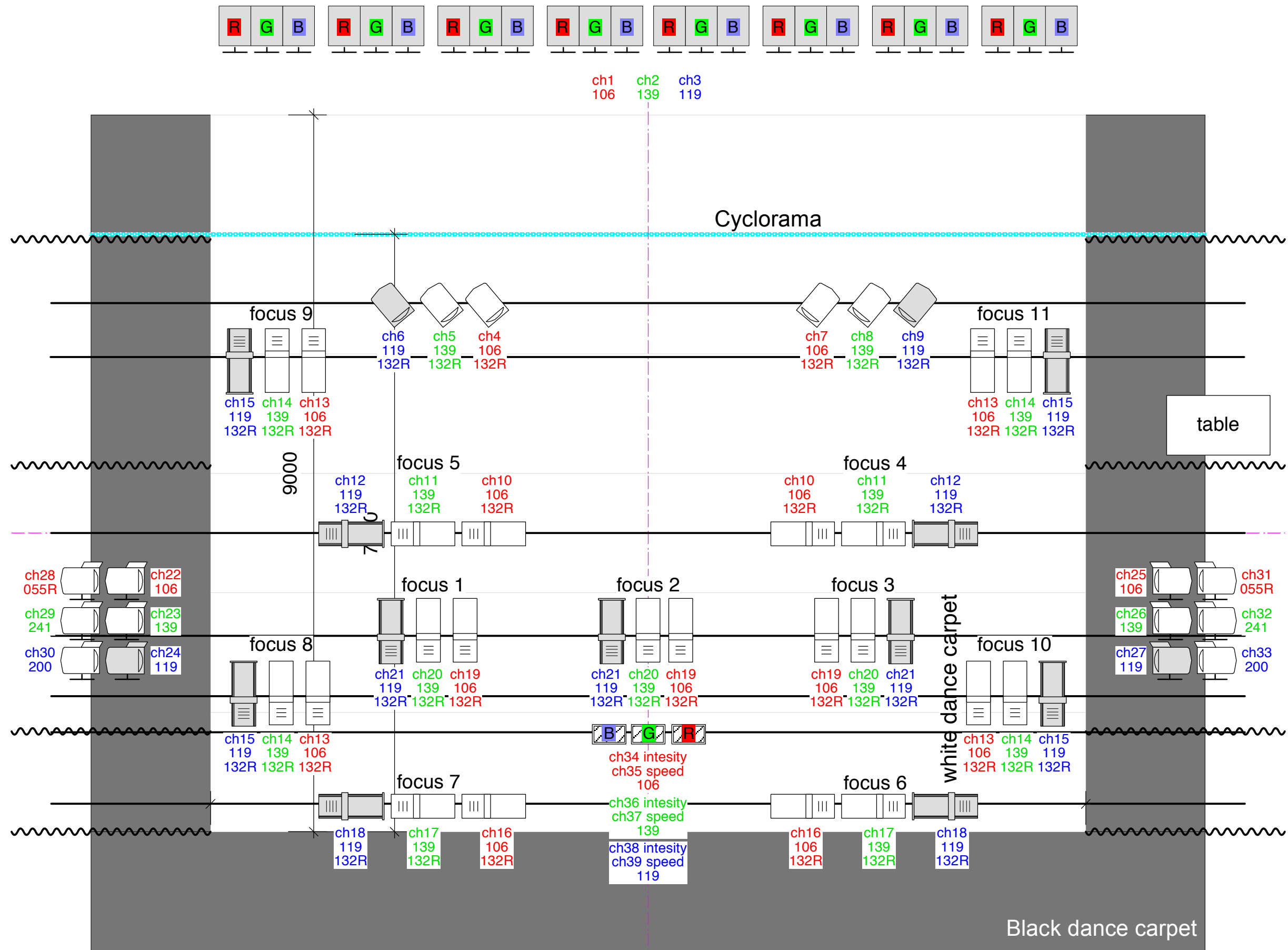
A sound system is needed to cover 20Hz ~ 20KHz and can play strong sound.

S20 - Hiroaki Umeda
Haptic - LIGHT PLOT

June 1, 2010

Channel	Light	Focus	Gel
1	CYC	CYCLORAMA	106
2	CYC		139
3	CYC		119
4	PC 1kw	WASH STAGE LEFT	106+132R
5	PC 1kw		139+132R
6	PC 2kw		119+132R
7	PC 1kw	WASH STAGE RIGHT	106+132R
8	PC 1kw		139+132R
9	PC 2kw		119+132R
10	Profile 1kw	CENTER LINE	106+132R
11	Profile 1kw		139+132R
12	Profile 2kw		119+132R
13	Profile 1kw	SIDE LINE	106+132R
14	Profile 1kw		139+132R
15	Profile 2kw		119+132R
16	Profile 1kw	DOWNSTAGE LINE	106+132R
17	Profile 1kw		139+132R
18	Profile 2kw		119+132R
19	Profile 1kw	UPSTAGE LINE + SCREEN	106+132R
20	Profile 1kw		139+132R
21	Profile 2kw		119+132R
22	PC 1kw	LOW-ANGLED	106
23	PC 1kw		139
24	PC 2kw		119
25	PC 1kw	LOW-ANGLED	106
26	PC 1kw		139
27	PC 2kw		119
28	PC 1kw	LOW-ANGLED	055R
29	PC 1kw		241
30	PC 1kw		200
31	PC 1kw	LOW-ANGLED	055R
32	PC 1kw		241
33	PC 1kw		200
34	ATOMIC 3000	STAGE	106
35			139
36			119
37	ATOMIC 3000		
38	ATOMIC 3000		
39	ATOMIC 3000		





scale 1:50/A3

S20 - Hiroaki Umeda
Haptic - light plot
June 1, 2010

614 SX (Profile 16°/35°)

714 SX (Profile 16°/40°)

PC 1kW (60°) with Barndoor

PC 2kW (60°) with Barndoor

PC 1kW (60°)

PC 2kW (60°)

CYCS

ATOMIC 3000

